



Graphophonemic Knowledge | Blending: Final Consonants

## GK-28 Final Blend Bingo

Blackline Master available  
www.tpri.org

Students play bingo using picture cards and final blends.

**MATERIALS:** Chalkboard/chalk, picture cards, bingo boards, chips/counters, pencils/markers

- 1 Select five to 10 final blends and write them on the chalkboard large enough for students to view.
- 2 Find picture cards with the same final blends as those selected. Have multiple pictures for each blend.
- 3 Create blank bingo boards with five columns and four rows, for a total of 20 squares.
- 4 Give each student a blank bingo board and 20 chips.
- 5 Using the blends on the chalkboard, students fill in the squares on their bingo boards in random order, writing one final blend per square, with each blend written in at least two squares. (If you play with fewer than 10 different blends, some will be written more than twice.)
- 6 One at a time, turn over a picture card and say the word depicted. Students use a chip to cover a square with the final blend that matches the sound of the picture.
- 7 The first student to cover an entire row or column wins.
- 8 Students clear their boards and play again as time permits.



**PREPARATION OF MATERIALS:** Print a blank 16 square BINGO sheet for each student. Print the picture cards. Cut the picture cards apart. Follow the directions for play.

Blends:	st	nt	sp	ct	mp	lt	nd	ft	nk	sk
---------	----	----	----	----	----	----	----	----	----	----

Set 1 (st, nt, sp, ct)	
vest	wrist
ant	plant
wasp	clasp
insect	connect

Set 2 (mp, lt, nd, ft)	
camp	jump
belt	quilt
hand	island
gift	raft

Set 3 (nk & sk)	
sink	skunk
desk	tusk

# Bingo




vest

GK-28

SET 1



wrist

GK-28

SET 1



ant

GK-28

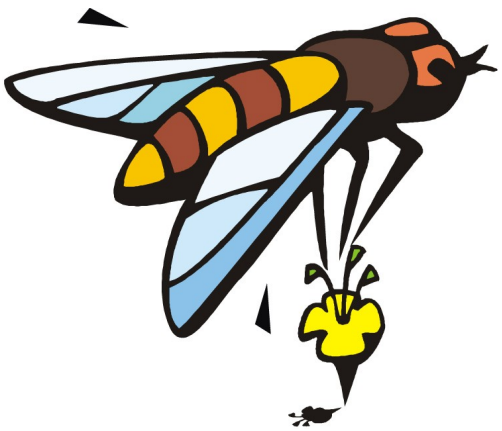
SET 1



plant

GK-28

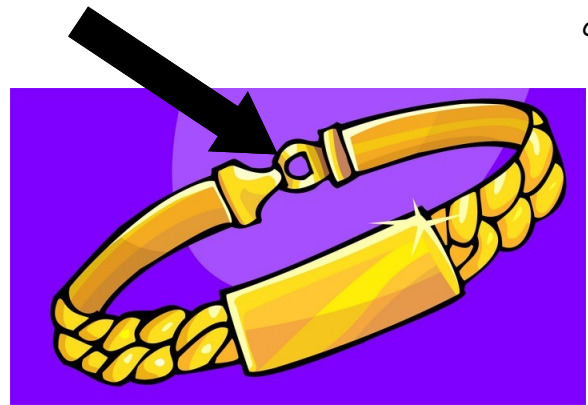
SET 1



wasp

GK-28

SET 1



clasp

GK-28

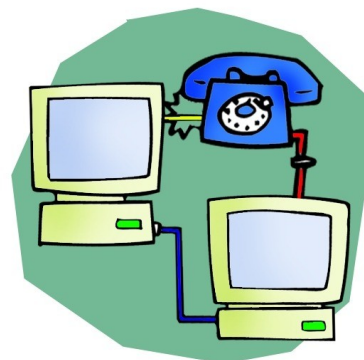
SET 1



insect

GK-28

SET 1

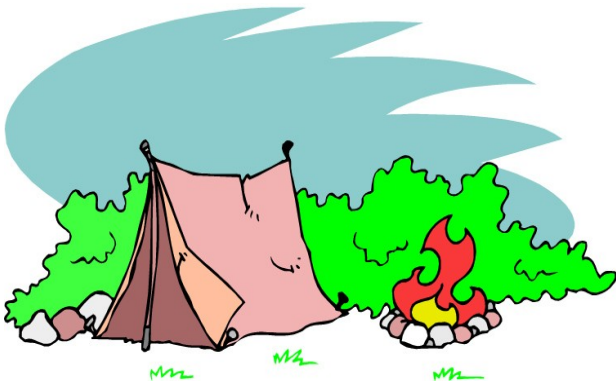


connect

GK-28

SET 1

camp



GK-28

SET 2

jump



GK-28

SET 2

belt



GK-28

SET 2

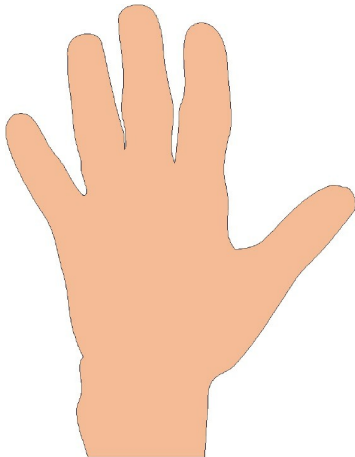
quilt



GK-28

SET 2

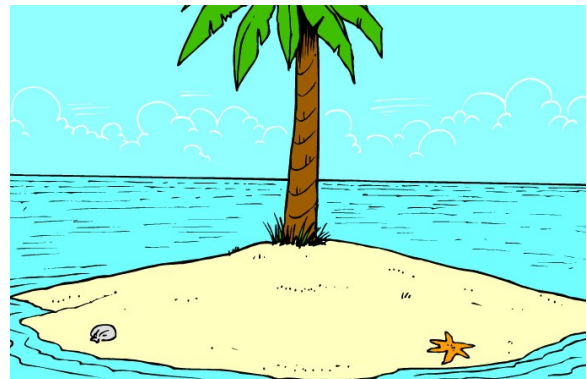
hand



GK-28

SET 2

island



GK-28

SET 2

gift



GK-28

SET 2

raft



GK-28

SET 2



sink

GK-28

SET 3



skunk

GK-28

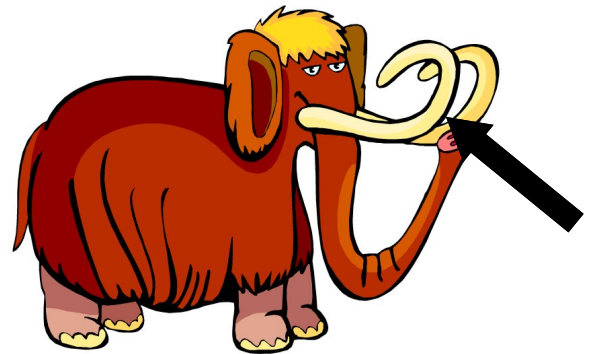
SET 3



desk

GK-28

SET 3



tusk

GK-28

SET 3