



Phonemic Awareness | Phoneme Play: Phoneme Comparison | Initial Sound

PA-38 Beginning Sound Concentration

Blackline Master available
www.tpri.org

Students match pictures that begin with the same sound.

MATERIALS: *Picture cards*

- 1 Arrange five to 10 pairs of picture cards face down on a table. Paired cards should begin with the same sound.
- 2 Students take turns turning over a picture card, saying the name, and then turning over

a second picture and saying its name. If the pictures begin with the same sound, it makes a pair and the student keeps the cards.

- 3 Play continues with each student taking a turn until all pictures are matched.



PREPARATION OF MATERIALS: Print Set 1 and Set 2 picture cards on different colored paper. Cut the picture cards apart. Follow the directions for play. Substitute words from Set 3 and Set 4 for additional practice.

Set 1	
octopus	camera
baby	walrus
hook	scissors
doctor	frog

Set 2	
ostrich	cactus
bear	watch
horn	sun
dog	flower

Set 3	
nail	lamb
vine	milk
apple	pants
grass	train

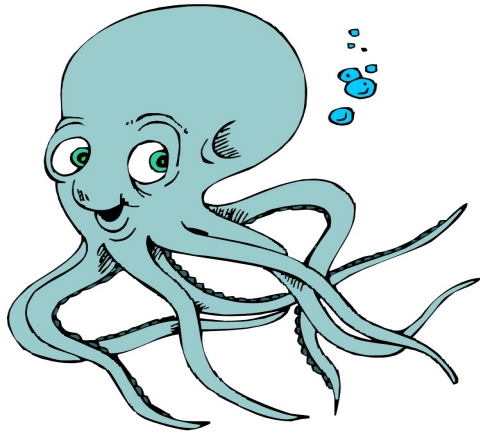
Set 4	
neck	lightening
violin	muscle
ants	policeman
groceries	tree



Less Challenging: Introduce the activity by using only 4 pairs of matching picture cards. As students experience success with the activity, gradually increase the number of cards used during the game.



More Challenging: Print Set 1 and Set 2 on the same color of paper. Add in or substitute picture cards from Set 3 and Set 4.



octopus

PA-38

SET 1



camera

PA-38

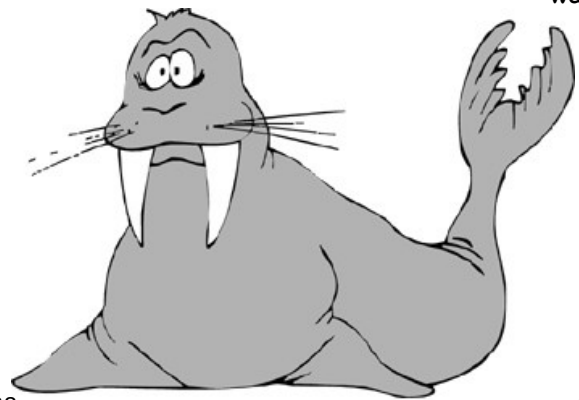
SET 1



baby

PA-38

SET 1



walrus

PA-38

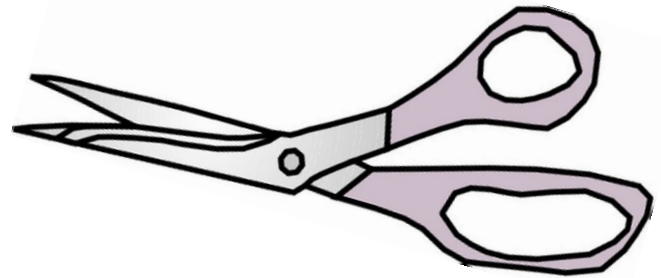
SET 1



hook

PA-38

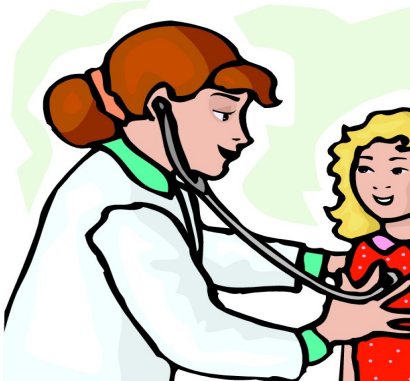
SET 1



scissors

PA-38

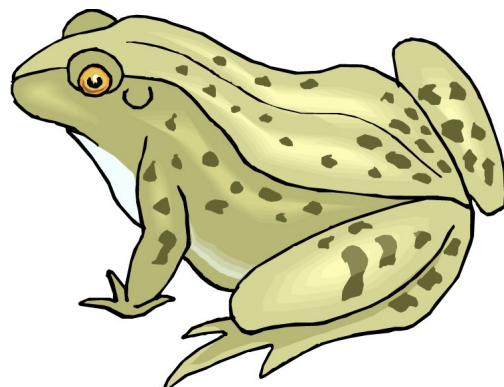
SET 1



doctor

PA-38

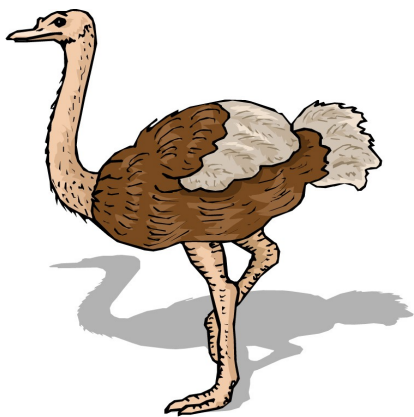
SET 1



frog

PA-38

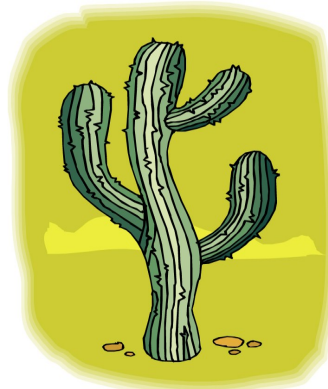
SET 1



ostrich

PA-38

SET 2



cactus

PA-38

SET 2



bear

PA-38

SET 2



watch

PA-38

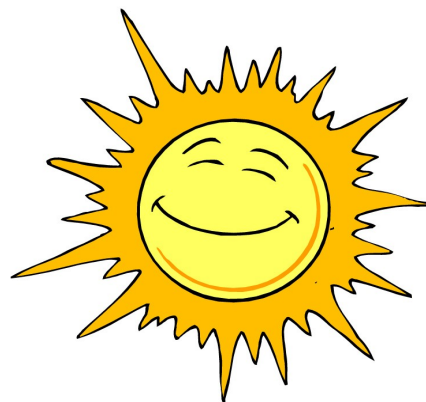
SET 2



horn

PA-38

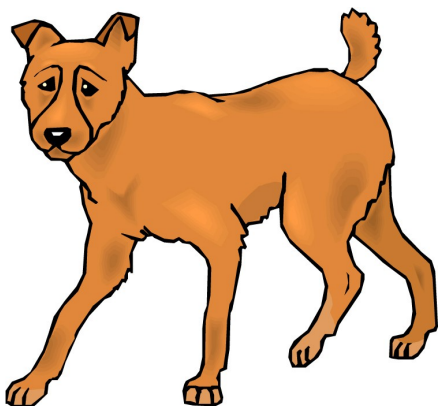
SET 2



sun

PA-38

SET 2



dog

PA-38

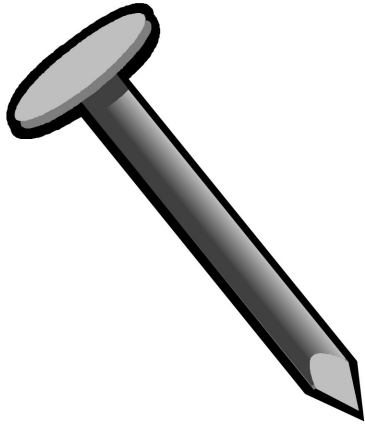
SET 2



flower

PA-38

SET 2



nail

PA-38

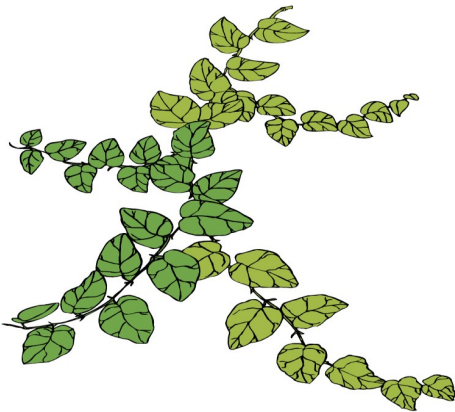
SET 3



lamb

PA-38

SET 3



vine

PA-38

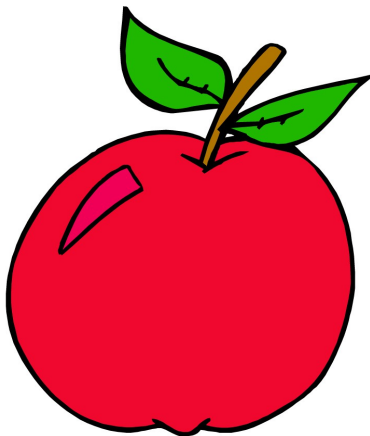
SET 3



milk

PA-38

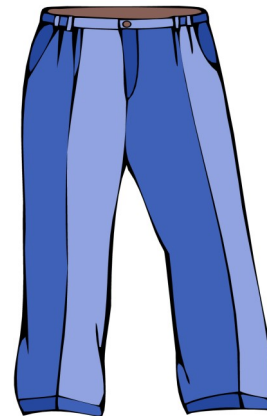
SET 3



apple

PA-38

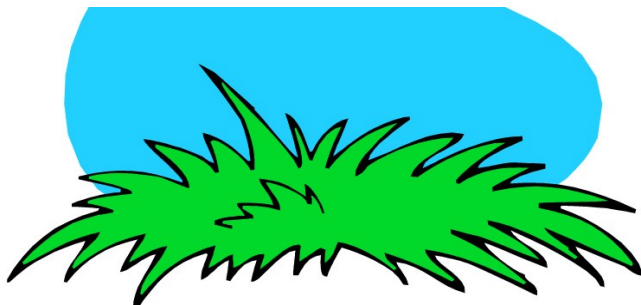
SET 3



pants

PA-38

SET 3



grass

PA-38

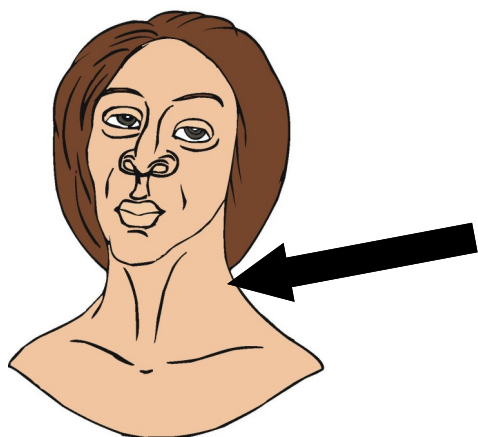
SET 3



train

PA-38

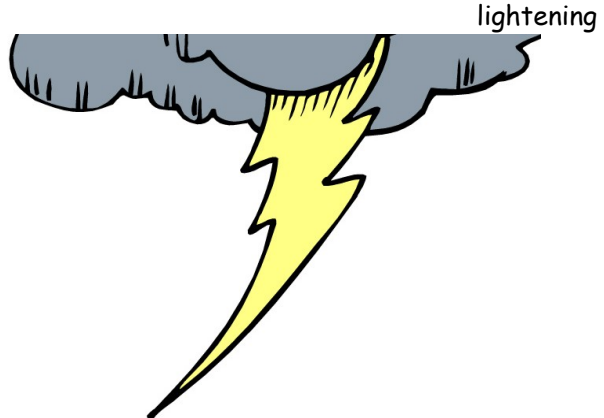
SET 3



neck

PA-38

SET 4



lightening

PA-38

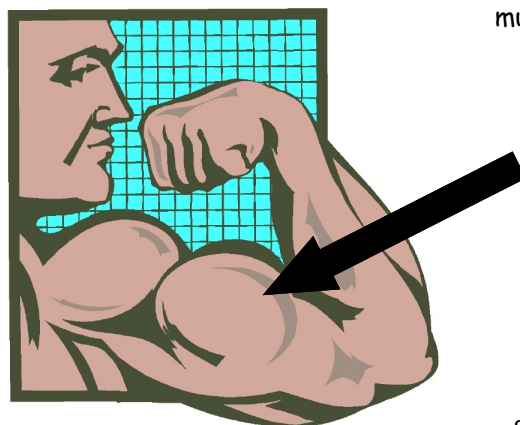
SET 4



violin

PA-38

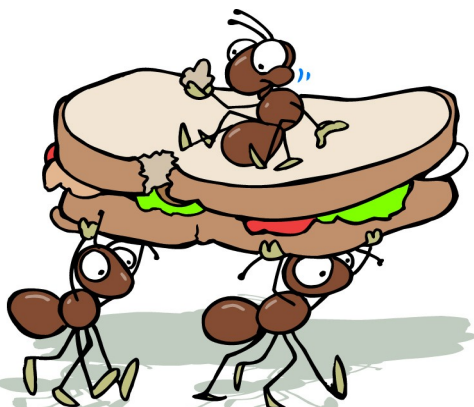
SET 4



muscle

PA-38

SET 4



ants

PA-38

SET 4



policeman

PA-38

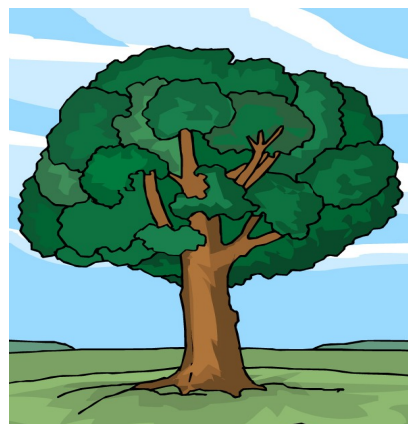
SET 4



groceries

PA-38

SET 4



tree

PA-38

SET 4